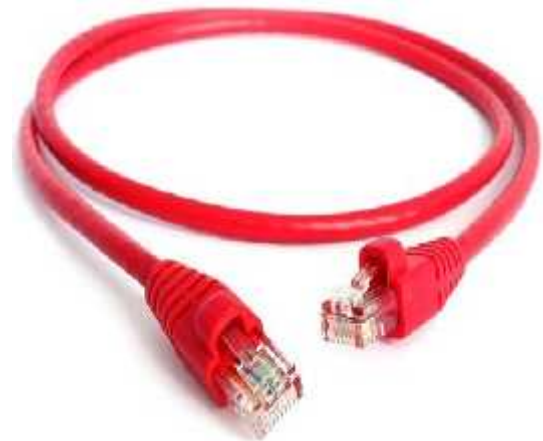




CAT.6 UTP Patch Cord Red - 1MTR

Avalon Patch Cords have been designed for high speed data transmission over local area Networks (LANs) and for Gigabit Ethernet 1000 Mbps applications. These cables exceed performance requirements specified by the TIA/EIA-568B.2 / TIA/EIA-568C.2 and IEC 60603-7-4 standards. Avalon cables are ideal for simple, cost-effective and high-speed transmission performance. They support a higher signal- to -noise ratio, providing better reliability for current applications and higher data rates for future applications. These Patch Cords comprise of a flexible patch cable and terminating with two modular plugs along with molded boots.

Make	AVALON
Type	Patch Cord
Colour	Red
Pairs	4
Length	1 Meter



Applications

- Patch Work and Work Area
- 4/16 Mbps Token Ring (IEEE 802.5)
- 10/100/1000 Base (IEEE 802.3)
- 155Mbps ATM
- 100 Mbps TP-PMD
- Analogue Voice ,ISDN,ADSL

Specifications

- Insulation Material: HDPE
- Conductor and Metal: 7 Bare Copper Wires, 24 AWG
- Jacket: PVC, UL94V-0
- Plugs: RJ-45 8P8C
- Contact : Gold plated: 30U"
- Contact blade: Phosphor Bronze
- Molded Boot: Fire Retardant PVC
- Fire Resistant: CMG Specifications

Standards

- ISO/IEC 11801:2011 (Ed. 2.2)
- ANSI/TIA/EIA-568-C.2
- EN 50173-1:2011
- EN 50173-2:2007 including amendment A1:2010
- IEC 61935-2:2010 (Ed.3.0)
- ROHS Compliant

Ordering Information

Part No.	Description	Length	Colour
ANC6UPRD-1MT	CAT.6 UTP Patch Cord - 1MTR	1 Meter*	Red*

* Available in different lengths and colours.