

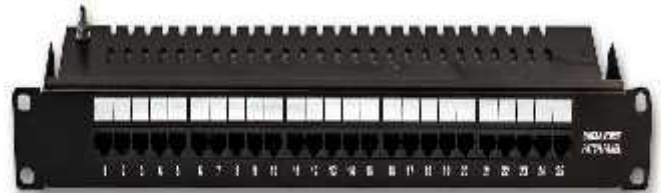


25 Port Voice Patch Panel

Avalon 25 Port Voice Patch Panels are high-quality Panels that support terminations of voice backbone cabling (vertical) and are designed to utilize minimum rack space by supporting 25 Ports in only 1U of rack space. These panels support both 1 and 2 pair connectivity for analog/digital telephone services via PABX or for the distribution of direct lines.

Features

- Standard 19" Rackmount 1U high
- 110 type wire termination
- RJ45 sockets 8 position, 8 contact socket, gold plated contacts
- Labeling individual ports numbered
- Includes standard 19" fixings and earthing kit



Specifications

- Space saving, high-density 1U
- Fit for LSA Punch Down Tool
- Thickness of cold-rolled steel: 1.5mm
- Spring Wire: Phosphor Bronze With Gold-plated 50u
- IDC Contact: Phosphor Bronze
- Insertion life: ≥ 1000 mating cycles
- Operating Temperature Range : -60° to 80°
- IDC Accept: 22-26 AWG
- Wire Scheme: T568A/B
- Insulation Resistance: 500Ω
- Current Rating: 1.5Amps
- DC Resistance: 0.1 ohm MAX
- Voltage: 150 VAC MAX
- Plug Retention Force: 89N

Applications

- Backbone Cabling
- ISDN, ADSL, PBX, Trunk Lines

Ordering Information

Part No	Description
ANC3VPP-25	25 Port Voice Patch Panel