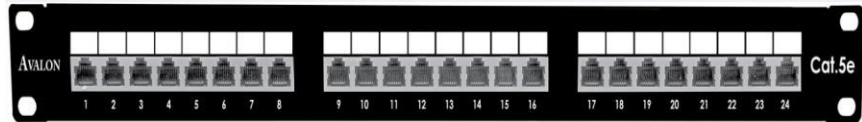


## CAT.5e Shielded 24 Port Patch Panel

**Avalon** CAT.5e 24 Port Patch Panels are the industry's high-quality Panels that support the latest technologies and diverse applications. These panels combine strength and durability with a sleek look, making them ideal for all kinds of environments. These comply with ANSI/TIA/EIA 568B.2, ISO/IEC 11801 and EN 50173-1 Class E specifications. The complete module complies with EU ROHS directive. The construction is in standard 19" size, suits for all 19" rack installations.

### Features

- High density 24 port 1U patch panel
- STP Snap-in Type
- Six Port RJ45 modules applied
- Suitable for Cat5e STP Keystone Jacks
- Integral plastic cable management
- Modern design and simplicity of mounting



### Specifications

- Thickness of cold-rolled steel:1.5mm
- Jack Shield: Phosphor Bronze with Nickel Plate
- Operating Temperature Range : -60°C to 80°C
- IDC Accept: 22-26 AWG
- Wire Scheme: T568A/B
- Insulation Resistance: 500Ω
- Current Rating: 1.5Amps
- DC Resistance: 0.1 ohm MAX
- Voltage: 150 VAC MAX
- Plug Retention Force: 89N
- Spring Wire: Phosphor Bronze With Gold-plated 3u-50u
- IDC Contact: Phosphor Bronze
- Specifically Design: With Two PCB Panel & Tool-less
- Insertion life:≥1000 mating cycles
- Plug /Jack Contact Force: 100g min
- Humidity: 5 to 93%( non condensing)

### Applications

- 1000 Base- TX Gigabit Ethernet
- 1000 Base- T Gigabit Ethernet
- 100 Base –TX Fast Ethernet
- 10 Base-T Ethernet
- Voice, Video and other applications
- Standard Size for mounting in 19" Racks and Cabinets

### Ordering Information

Part No	Description
ANC5ESP-24	CAT.5e Shielded 24 Port Patch Panel